

Bunkyo City Storm Surge Hazard Map

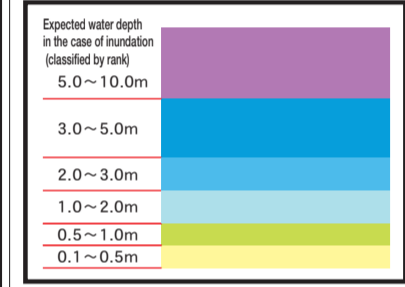
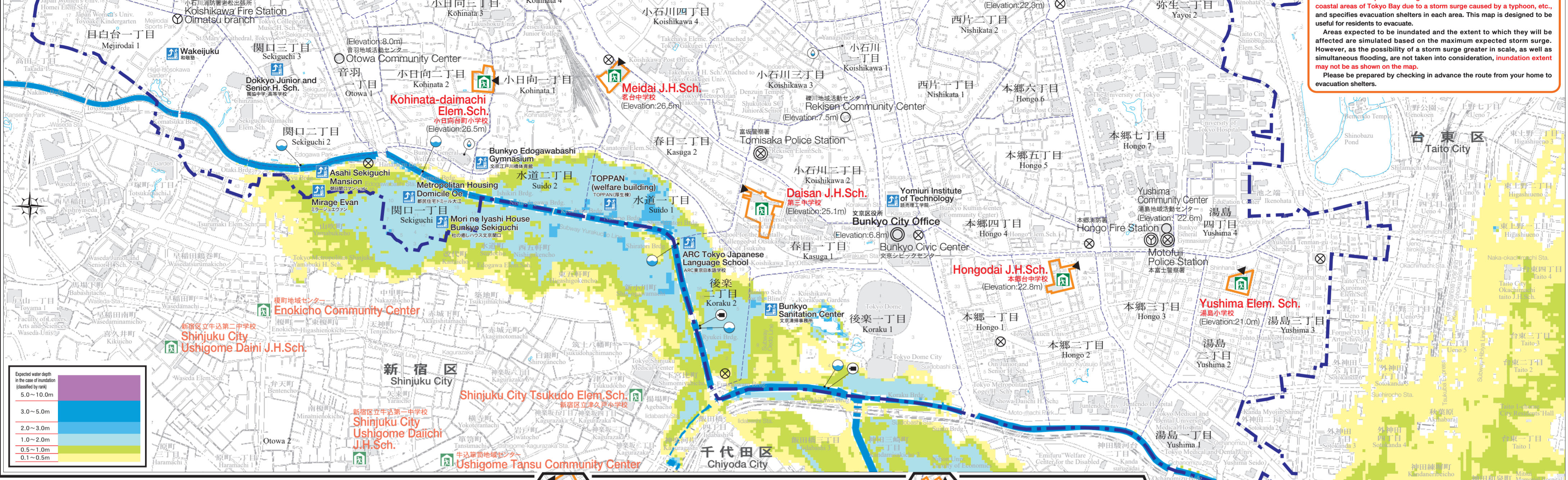
[Inundation risk area]

About the Storm Surge Hazard Map (Inundation Risk Expectation Area Map)

Based on a Tokyo Metropolitan Government-prepared map of areas expected to be inundated, this map shows areas expected to be inundated and inundation depth if flooding occurs at the seashore and rivers in the coastal areas of Tokyo Bay due to a storm surge caused by a typhoon, etc., and specifies evacuation shelters in each area. This map is designed to be useful for residents to evacuate.

Areas expected to be inundated and the extent to which they will be affected are simulated based on the maximum expected storm surge. However, as the possibility of a storm surge greater in scale, as well as simultaneous flooding, are not taken into consideration, **inundation extent may not be as shown on the map.**

Please be prepared by checking in advance the route from your home to evacuation shelters.



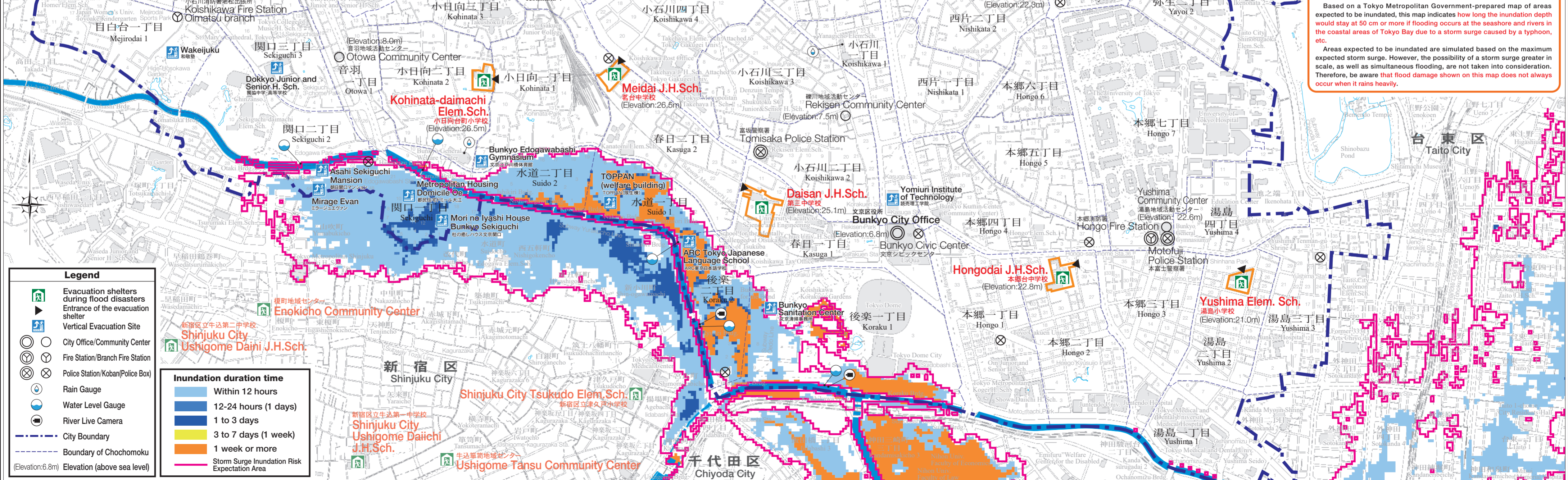
Bunkyo City Storm Surge Hazard Map

[Inundation duration time]

About the Storm Surge Hazard Map (Inundation duration time)

Based on a Tokyo Metropolitan Government-prepared map of areas expected to be inundated, this map indicates how long the inundation depth would stay at 50 cm or more if flooding occurs at the seashore and rivers in the coastal areas of Tokyo Bay due to a storm surge caused by a typhoon, etc.

Areas expected to be inundated are simulated based on the maximum expected storm surge. However, the possibility of a storm surge greater in scale, as well as simultaneous flooding, are not taken into consideration. Therefore, be aware that flood damage shown on this map does not always occur when it rains heavily.



Legend

- Evacuation shelters during flood disasters
- Entrance of the evacuation shelter
- Vertical Evacuation Site
- City Office/Community Center
- Fire Station/Branch Fire Station
- Police Station/Koban(Police Box)
- Rain Gauge
- Water Level Gauge
- River Live Camera
- City Boundary
- Boundary of Chochoomoku
- Elevation (above sea level)

Inundation duration time

- Within 12 hours
- 12-24 hours (1 days)
- 1 to 3 days
- 3 to 7 days (1 week)
- 1 week or more
- Storm Surge Inundation Risk Expectation Area