

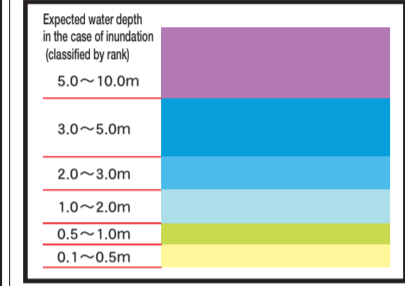
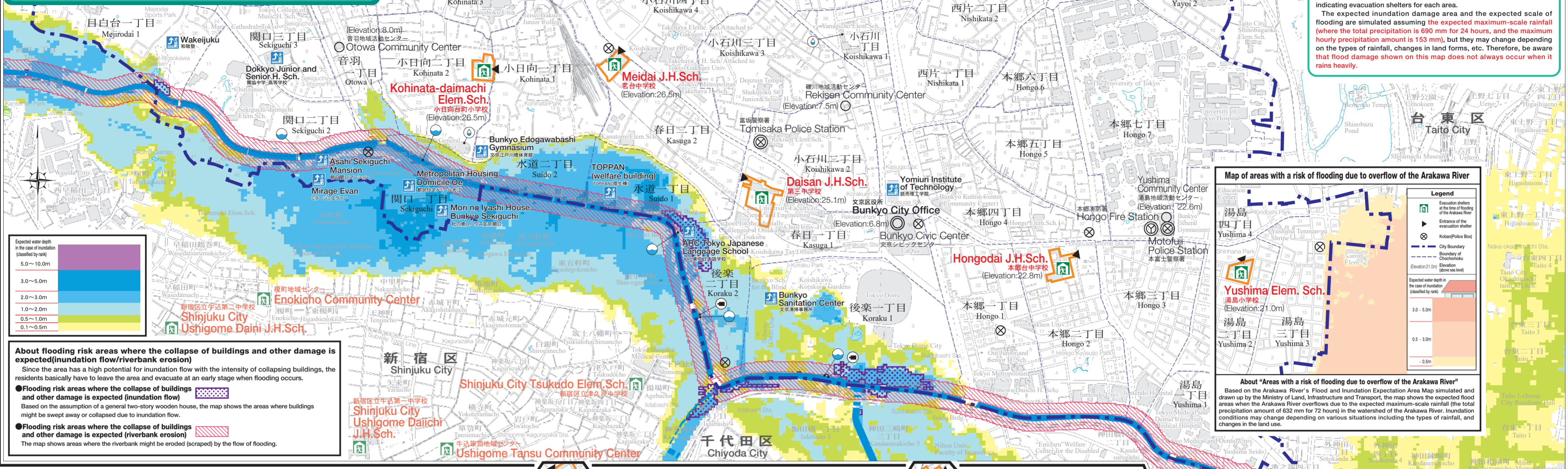
Bunkyo City Flood Hazard Map [Kanda River/Arakawa River version]

[Inundation risk area/Area where the collapse of buildings and other damage is expected (Inundation flow/Riverbank erosion)]

About the Flood Hazard Map (Inundation Risk Expectation Area Map)

Based on a Tokyo Metropolitan Government-prepared map of areas expected to be inundated, this map was created to help residents evacuate in emergencies by showing the inundation risk area and flood depth, etc., when the Kanda River overflows due to heavy rain as well as indicating evacuation shelters for each area.

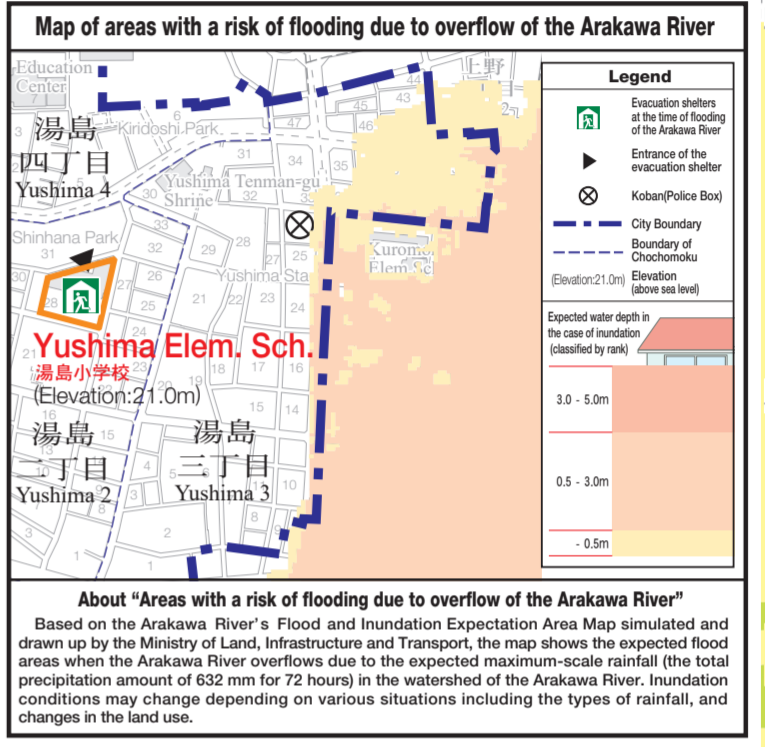
The expected inundation damage area and the expected scale of flooding are simulated assuming the expected maximum-scale rainfall (where the total precipitation is 690 mm for 24 hours, and the maximum hourly precipitation amount is 153 mm), but they may change depending on the types of rainfall, changes in land forms, etc. Therefore, be aware that flood damage shown on this map does not always occur when it rains heavily.



About flooding risk areas where the collapse of buildings and other damage is expected (Inundation flow/riverbank erosion)

Since the area has a high potential for inundation flow with the intensity of collapsing buildings, the residents basically have to leave the area and evacuate at an early stage when flooding occurs.

- Flooding risk areas where the collapse of buildings and other damage is expected (Inundation flow)**
Based on the assumption of a general two-story wooden house, the map shows the areas where buildings might be swept away or collapsed due to inundation flow.
- Flooding risk areas where the collapse of buildings and other damage is expected (riverbank erosion)**
The map shows areas where the riverbank might be eroded (scraped) by the flow of flooding.



Bunkyo City Flood Hazard Map [Kanda River/Arakawa River version]

[Inundation duration time]

About the Flood Hazard Map (Inundation duration time)

Based on a Tokyo Metropolitan Government-prepared map of areas expected to be inundated, the map shows the duration of floods water remaining at a depth of 50 cm or more when the Kanda River flows due to heavy rain.

The expected inundation damage area and the expected scale of flooding are simulated assuming the expected maximum-scale rainfall (where the total precipitation is 690 mm for 24 hours, and the maximum hourly precipitation amount is 153 mm), but they may change depending on the types of rainfall, changes in land forms, etc. Therefore, be aware that flood damage shown on this map does not always occur when it rains heavily.

