

Bunkyo City Flood Hazard Map

About the Flood Hazard Map

Based on the Inundation Risk Prediction Area Map drawn up by Tokyo Metropolis, this map is created to help citizens to evacuate in emergencies by showing the expected inundation areas and flood depth when rivers and sewerage overflow, as well as indicating evacuation shelters for each area.

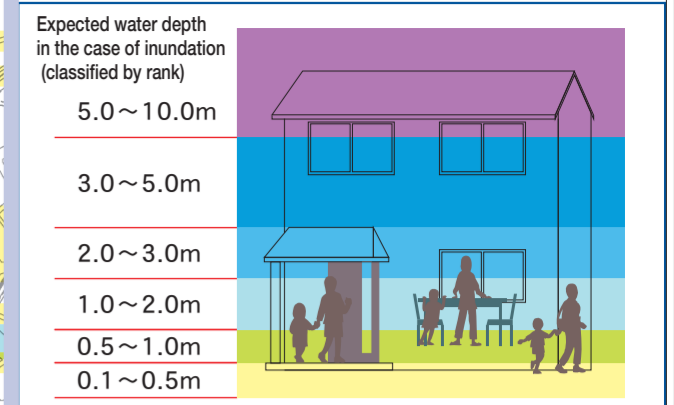
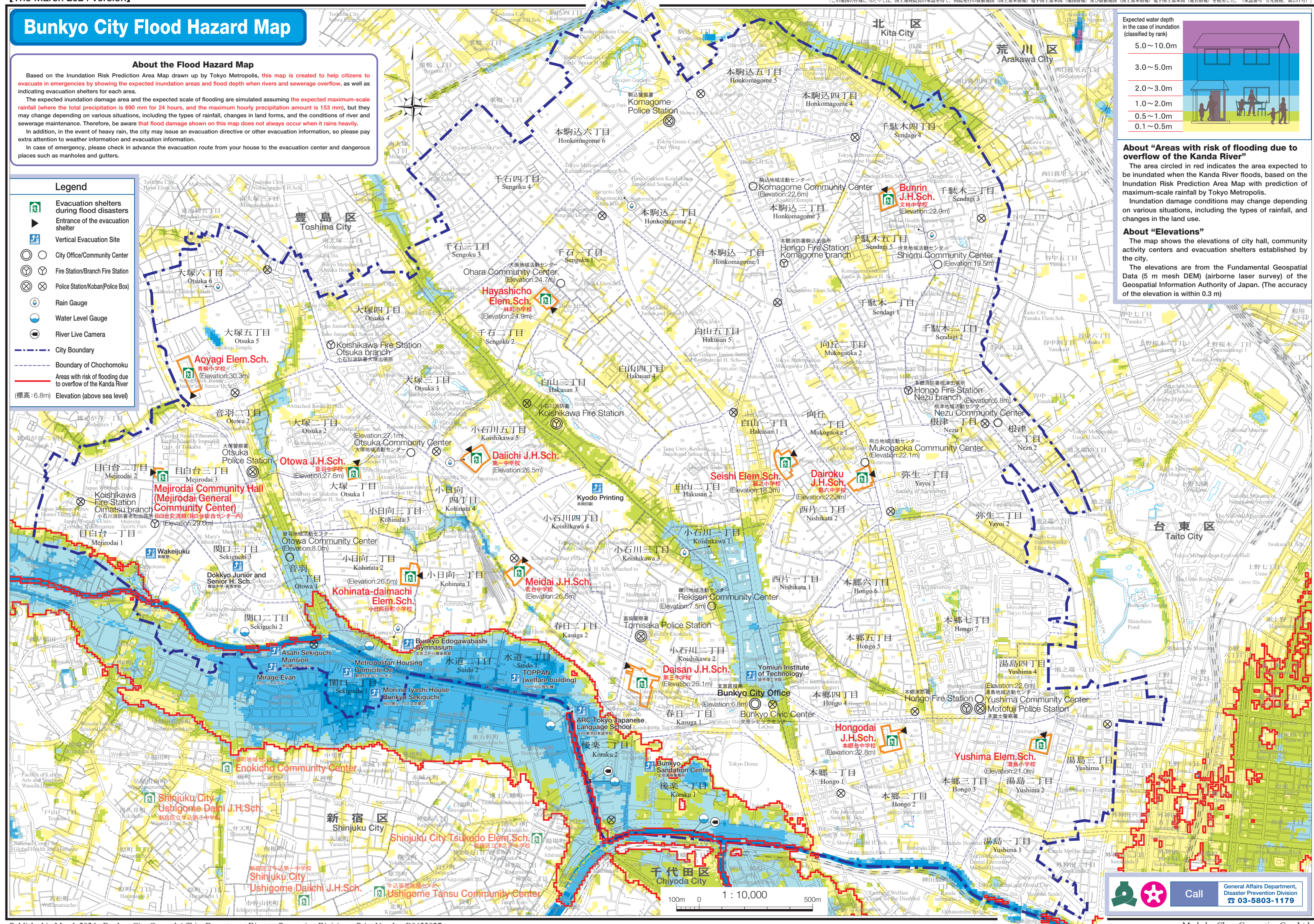
The expected inundation damage area and the expected scale of flooding are simulated assuming the expected maximum-scale rainfall (where the total precipitation is 690 mm for 24 hours, and the maximum hourly precipitation amount is 153 mm), but they may change depending on various situations, including the types of rainfall, changes in land forms, and the conditions of river and sewerage maintenance. Therefore, be aware that flood damage shown on this map does not always occur when it rains heavily.

In addition, in the event of heavy rain, the city may issue an evacuation directive or other evacuation information, so please pay extra attention to weather information and evacuation information.

In case of emergency, please check in advance the evacuation route from your house to the evacuation center and dangerous places such as manholes and gutters.

Legend

- Evacuation shelters during flood disasters
 - Entrance of the evacuation shelter
 - Vertical Evacuation Site
 - City Office/Community Center
 - Fire Station/Branch Fire Station
 - Police Station/Koban(Police Box)
 - Rain Gauge
 - Water Level Gauge
 - River Live Camera
 - City Boundary
 - Boundary of Chochomoku due to overflow of the Kanda River
 - Areas with risk of flooding due to overflow of the Kanda River
- (標高:6.8m) Elevation (above sea level)



“Areas with risk of flooding due to overflow of the Kanda River”

The area circled in red indicates the area expected to be inundated when the Kanda River floods, based on the Inundation Risk Prediction Area Map with prediction of maximum-scale rainfall by Tokyo Metropolis.

Inundation damage conditions may change depending on various situations, including the types of rainfall, and changes in the land use.

“Elevations”

The map shows the elevations of city hall, community activity centers and evacuation shelters established by the city.

The elevations are from the Fundamental Geospatial Data (5 m mesh DEM) (airborne laser survey) of the Geospatial Information Authority of Japan. (The accuracy of the elevation is within 0.3 m)

Call General Affairs Department, Disaster Prevention Division
☎ 03-5803-1179