

# Recommended Spots by International Students in Bunkyo City



Our recommendations!

## Nezu-jinja Shrine



At Nezu-jinja Shrine, three hundred years of history hangs in the air, and as you pass through the vermilion torii gates, you can almost feel its warmth.



traveler\_nezu



#bunkycity #sightseeing

This flyer presents some of Bunkyo City's most interesting attractions, based on impressions and photos taken by international students who live and study here.



## Koishikawa Korakuen Gardens



It is Japan's oldest feudal lord's garden in the Edo period. The water in the pond was clear, reflecting the sky and trees, while ducks fed and rested leisurely. It made me feel calm and relaxed too.



traveler\_korakuen



## Gokokuji Temple



This temple is notable for its quiet atmosphere and timeworn buildings. If you feel restless, take a walk around Gokokuji Temple and get away from the bustle of the city.



traveler\_sekiguchi



## Tokyo Dome City (Amusement Park)



The Tokyo Dome is one of Japan's most famous stadiums, hosting all sorts of events including baseball games, concerts and exhibitions. The surrounding area features an amusement park and restaurants, which attract many visitors.



traveler\_kasuga



## Yushima-tenmangu Shrine



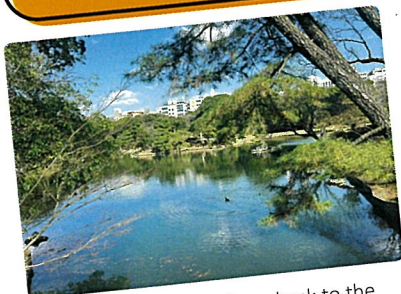
The shrine's main hall is a historic building that many people come to visit. There are many ema (votive picture tablets) bearing wishes for academic success, and it felt like a place that supports those who are studying.



traveler\_yushima



## Rikugien Gardens



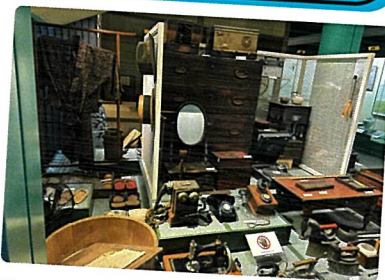
This Japanese garden dates back to the Edo period. Expressing landscapes from Waka poetry, it gives visitors the chance to enjoy the natural beauty of the four seasons. Despite its location in the heart of the city, this famous garden is the perfect place to spend some quiet quality time.



traveler\_honkomagome



## Bunkyo Museum (Furusato Rekishikan)



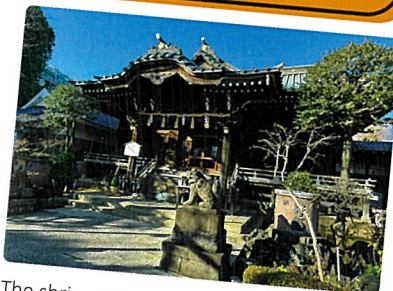
This museum is dedicated to collating the history of Bunkyo City. Bunkyo City is home to many universities and places associated with great literary figures, and the museum made me realize what an important place it is for Japanese academics and literature.



traveler\_hongo



## Hakusan-jinja Shrine



The shrine grounds have a spiritual atmosphere, and visiting provides a sense of serenity, as if your worries are being washed away. The approach to the temple is perfect for a stroll, giving visitors a sense of harmony between traditional Japanese character and the natural environment.



traveler\_hakusan



## Ushi-tenjin Kitano-jinja Shrine



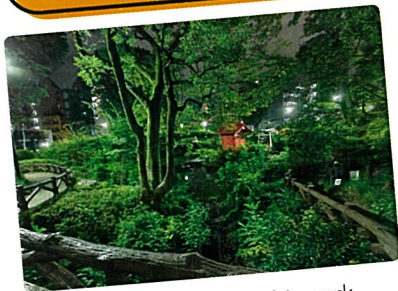
This shrine is often visited by people wishing for success in their studies and exams. You can also pick up an omikuji (fortune slip) or buy an omamori (lucky charm). It is also an ideal place for a quiet stroll.



traveler\_kasuga



## Sudo Park



Although little known, this park is a serene place that evokes the atmosphere of old Edo. Its grandeur, amidst Tokyo's busy streets, took my breath away.



traveler\_sendagi



## University of Tokyo



Even though the Tokugawa Shogunate is long gone and its original significance has been lost, the Akamon Gate of the University of Tokyo is a structure that truly exists in its own right, continuing to stand as a fragment of history that requires no further explanation.



traveler\_hongo

