

Notice from Bunkyo City

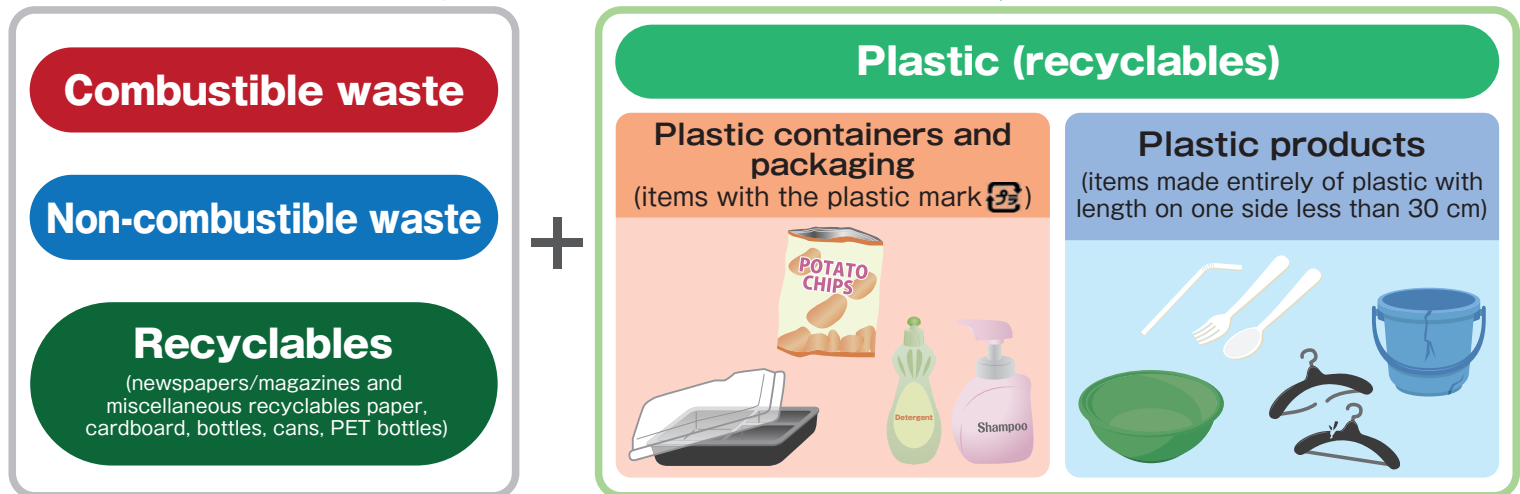
(Recycling and Cleaning Division / Bunkyo Sanitation Center, Resource Environment Department)



Separated collection From waste to recyclables of plastic waste will begin in April 2025

Please put out “plastic containers and packaging” and “plastic products” that are currently put out on the day for **combustible waste** on the day for **plastic (recyclables)**.

In addition to the **current collection days**, a new **day for plastic (recyclables)** will be established starting from April 2025.



Plastic (recyclables) collection days (once a week) for each community

Plastic (recyclables) collection day	Community	Plastic (recyclables) collection day	Community
Every Monday From April 7	Koishikawa 1-chome 17 to 28 Hakusan 2- and 5-chome Hakusan 3- and 4-chome Sengoku 1-4-chome	Every Thursday From April 3	Sendagi 3-5-chome Honkomagome 1- and 2-chome Honkomagome 3-6-chome
Every Tuesday From April 1	Kasuga 2-chome Koishikawa 2- and 3-chome Koishikawa 4-chome 1 to 14 Koishikawa 4-chome 15 to 22 Koishikawa 5-chome Otsuka 3-6-chome	Every Friday From April 4	Koishikawa 1-chome 1 to 16 Hakusan 1-chome Nishikata 1- and 2-chome Mukogaoka 1- and 2-chome Yayoi 1- and 2-chome Nezu 1- and 2-chome Sendagi 1- and 2-chome
Every Wednesday From April 2	Koraku 2-chome Suido 1- and 2-chome Kohinata 1-4-chome Otsuka 1- and 2-chome Sekiguchi 1-3-chome Mejirodai 1-3-chome Otowa 1- and 2-chome	Every Saturday From April 5	Koraku 1-chome Kasuga 1-chome Hongo 1- and 2-chome Hongo 3-7-chome Yushima 1-chome Yushima 2-4-chome

[Contacts for inquiries] General inquiries on operations ▶ Cleaning Business Section, Recycling and Cleaning Division, Resource Environment Department, Bunkyo City, Tel.: 03-5803-1184

Regarding collection and transport ▶ Operations Section, Bunkyo Sanitation Center, Resource Environment Department, Bunkyo City, Tel.: 03-3813-6661

Collected plastic (recyclables)

Plastic containers and packaging (items with the plastic mark)

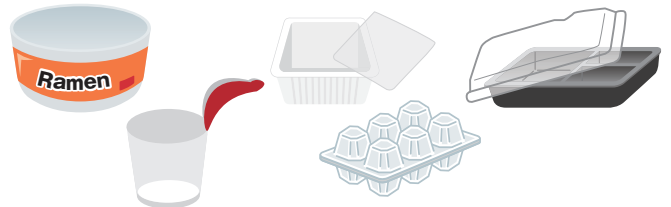
Bottles and caps

Containers for shampoo and detergent, etc., containers for edible oils and lactic acid bacteria beverages, etc., and plastic caps, etc.



Cups and packs

Cups for pudding, etc., packs for fruit and ham, etc., containers for instant noodles, packaged meals, tofu, eggs, etc.



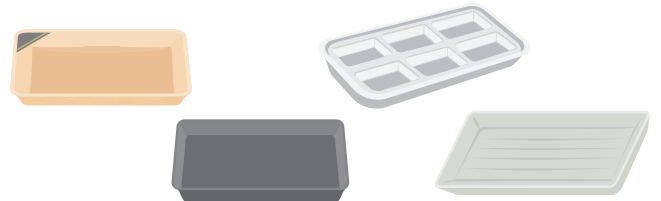
Tubes

Tubes for condiments, toothpaste, cosmetics, etc.



Trays

Trays for prepared and fresh foods, partitions for sweets, seaweed, and frozen foods, etc.



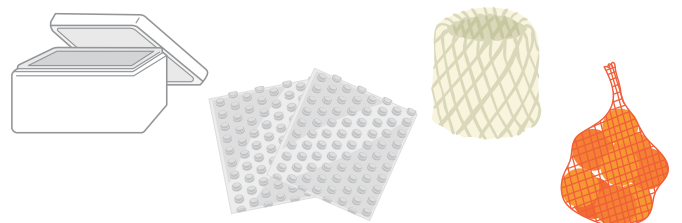
Bags for foods and daily necessities

Bags for bread, sweets, snacks, and instant foods, plastic shopping bags, wrap/film, shampoo refill containers, etc.



Polystyrene foam, cushioning material, etc.

Polystyrene foam and sheets, net-shaped cushioning for fruits, etc.



Plastic products (items made entirely of plastic with length on one side less than 30 cm)

(Examples)



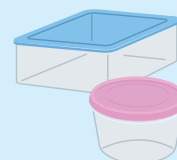
Hangers, buckets



Watering pots



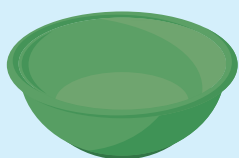
Spoons, forks, straws



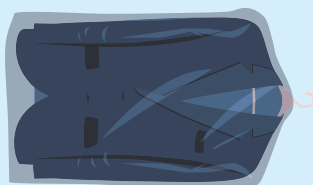
Cases



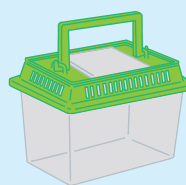
CD and DVD cases
(contents are combustible waste)



Washing tubs



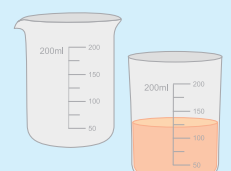
Wrapping for dry cleaning



Insect cages



Toothbrushes



Measuring cups

✗ Items that cannot be collected as plastic (recyclables) ✗

- Items with adhered soiling that cannot be removed with a light rinse



Soiled items can't be mixed in because the soiling will spread to other plastic.



- PET bottle bodies

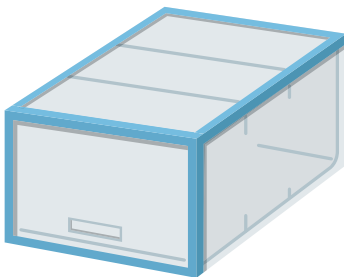
Caps and labels can be put out as **plastic (recyclables)**



➔ To combustible waste

➔ To PET bottles (recyclables)

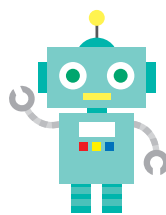
- Items with length on one side of 30 cm or more (items made entirely of plastic)



➔ To large-sized waste

- Items incorporating non-plastic materials

➔ To **combustible waste** or **non-combustible waste**



Toys (with screws, batteries, etc.)



Small consumer electronics, etc. (mobile phones and smartphones, game devices, desktop calculators, AC adapters, music players, etc.)



Appliance or electronic products with batteries, electric wiring, or metal

➔ Remove batteries and put out as non-combustible waste

Nine types of small consumer electronics are also collected as recyclables at events (Stage Eco).

Scan this code to check the nine types of small consumer electronics and information on when and where events are held.▶



- Items with blades or a danger of catching fire



Portable battery packs

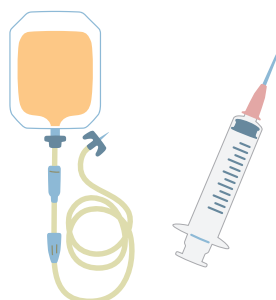
Lighters

Items with blades

➔ Wrap items with blades in paper, indicate "DANGER", and put out as non-combustible waste
Separate lighters from other non-combustible waste, indicate "DANGER", and put out as non-combustible waste

See the following page for information on how to put out portable battery packs.

- Items used in home healthcare, etc. (syringes, IV supplies, etc.)



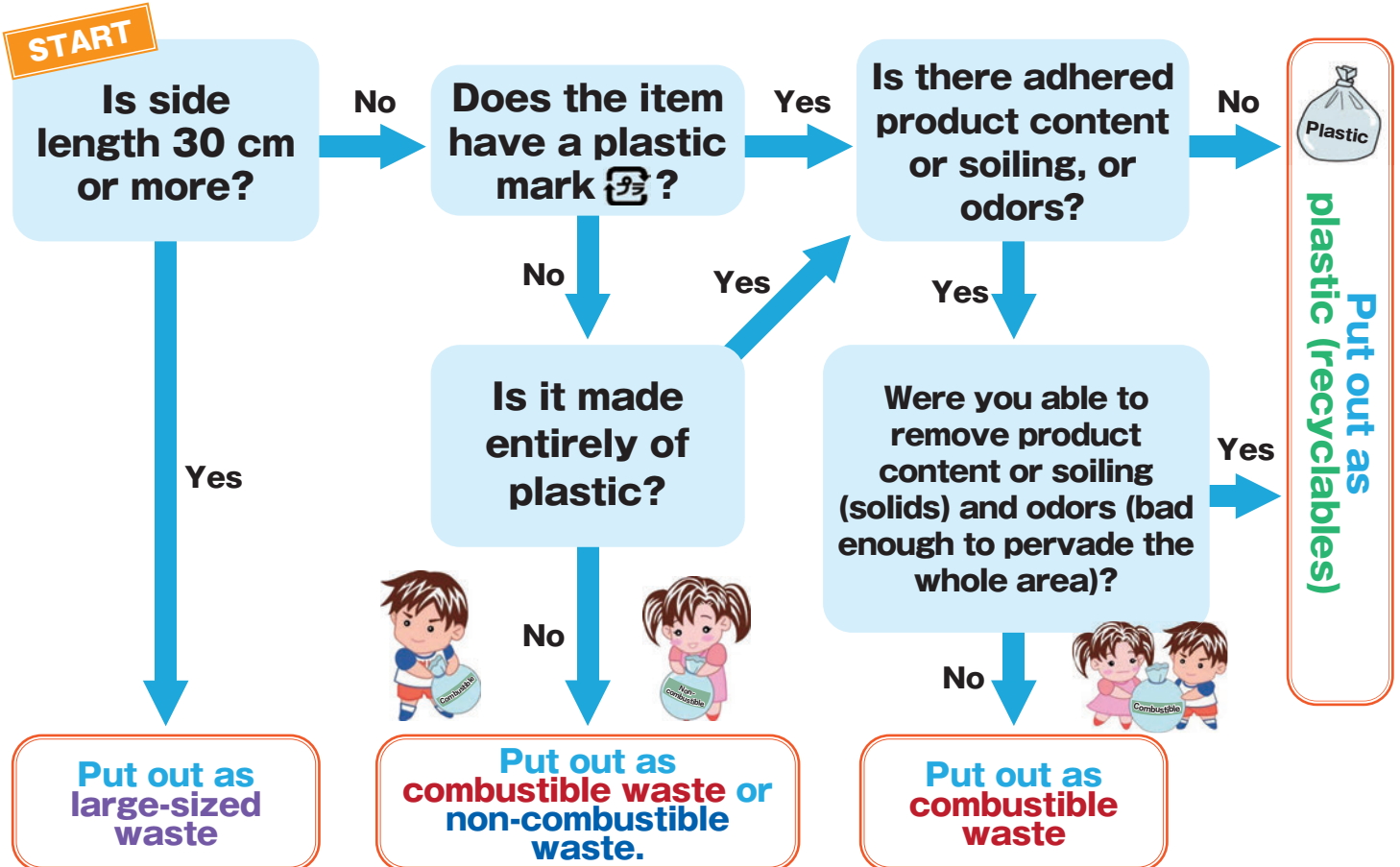
Used syringe needles are collected at pharmacies in the city.

City website
"Collection of used syringe needles" ▶



➔ Put out syringe bodies and IV packs with combustible waste

How to distinguish plastic (recyclables)



Separation methods and a Q&A are provided on the city's website, so please also check the information there. ►

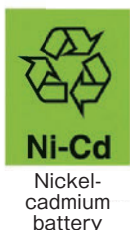


Absolutely never put out portable battery packs or small rechargeable batteries (secondary batteries)!

There is a risk that portable battery packs or small rechargeable batteries (secondary batteries) will catch fire during transport or sorting, and this is very dangerous.



The following marks are signs of a small rechargeable battery (secondary battery).



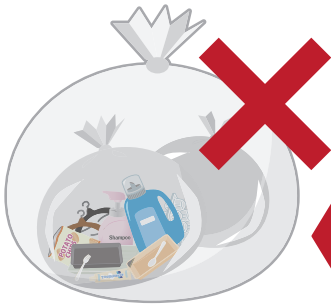
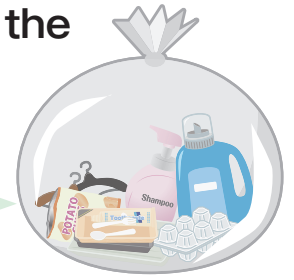
Information on how to put out portable battery packs and small rechargeable batteries (secondary batteries) is provided on the city's website. Scan this code to access the information.►



▲Secondary battery put out in the trash

How to put out plastic (recyclables)

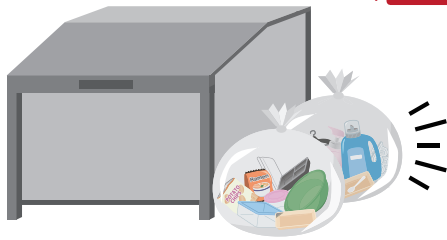
Place in a transparent or semi-transparent vinyl bag so the contents can be identified, and put out at the collection point by 8:00 a.m. on the collection day.



By folding up or stacking plastic, you can gather more plastic with less bulk.

Do not use double bags.

Separation work is carried out by tearing bags at the recycling facility, so please place items directly into the bag. Do not do double-bagging, such as placing small bags containing items into a large bag.



If there is a garbage stocker outside your apartment building, etc., put the waste outside of the stocker.

If you are worried bags will be swept away by the wind, please use bird netting. Bird netting is loaned out by Community Centers, the Bunkyo Sanitation Center, and the Recycling and Cleaning Division.

- Put bird netting away as soon as possible after plastic has been collected.
- Do not fasten bird netting to a guard rail or tree, etc.

Center collection, and store collection by the city, will be phased out.

Center collection of plastic bottles and polystyrene food trays, carried out at 12 centers in the city, and store collection of PET bottle caps carried out at six stores in the city, will be phased out by March 2025.

*Please check the city's website for the final day at each center and store.

*Collection of food trays and PET bottle caps at stores cooperating with promotion of recycling will continue.

*Center collection will continue for paper packs, dry batteries, fluorescent tubes, clothing, ink cartridges, measuring instruments using mercury, smartphones, and mobile phones.

We ask for your continuing cooperation to help achieve effective use of recyclables.

City website



▲Center collection



▲Store collection

From April 2025, please put out the following at the collection point on the day for plastic (recyclables).



Plastic bottles



Polystyrene foam food trays



PET bottle caps

Thus far

To center/
store collection



From April 2025

To collection point on day
for plastic (recyclables)



Thank you for your cooperation thus far.

How to put out each type of item

Bags for snacks

Gently tap or otherwise get rid of residues as far as possible, and then dispose.



State with no solids



State with residual solids

Containers for packaged meals, instant noodles, etc.

Gently rinse away contents and soiling with water, etc., or wipe with an unneeded cloth, etc.

An item can be put out as **plastic (recyclables)** even if there are residual food pigments or small amounts of oil.



State with no solids or liquids



State with residual solids or liquids

If the sliminess is removed, a *natto* (fermented soybeans) pack can be put out as **plastic (recyclables)**. Soaking the pack in water for a while will make the sliminess easier to remove.



Bottles and tubes

Put out after washing out the contents by taking in water from the opening and gently rinsing.



State with no contents



State with residual contents

If it's hard to get water into a tube, you can rinse it more easily by cutting it in half.



Be careful not to cut yourself on the sharp edge!

How to put out each type of item

Paper stickers

If the sticker is easy to remove, remove it and put the item out.

If it can't be removed, the item can still be put out, as is, as **plastic (recyclables)**.



The removed sticker is **combustible waste!**



PET bottles

Put out PET bottle caps and labels as **plastic (recyclables)**.

Put out PET bottle bodies as **PET bottles (recyclables)** on the day for recyclables.



➔Plastic



➔PET bottle bodies

PET bottle bodies are also made of plastic, but we are recycling more efficiently by collecting PET bottle bodies only.



? Can you put these out as plastic (recyclables)?

■ Medication packaging (with aluminum processing)

- Put out items with the plastic mark ♻️ as **plastic (recyclables)**.
- If the packaging only indicates "metal," put out as **non-combustible waste**.
- If there is no indication on the packaging, put out as **combustible waste**.



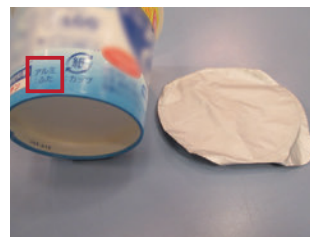
▲ The label says "metal," but there is a plastic mark ♻️ so put out as **plastic (recyclables)**.

■ Silver-colored covers (yogurt, etc.)

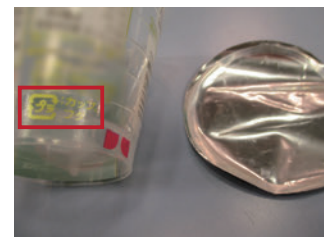
Carefully check the label!



- Aluminum processed covers can't be put out as **plastic (recyclables)**. Put out as **non-combustible waste**.
- Even if the back side is silver colored, put out as **plastic (recyclables)** if there is a plastic mark ♻️.



Cover with aluminum processing



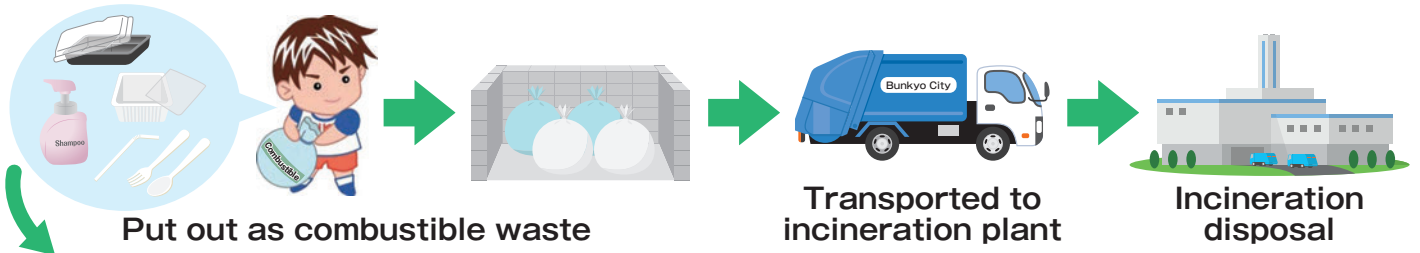
Plastic cover

You can also watch a video on how to put out each type of item. We hope you will use this video for reference.



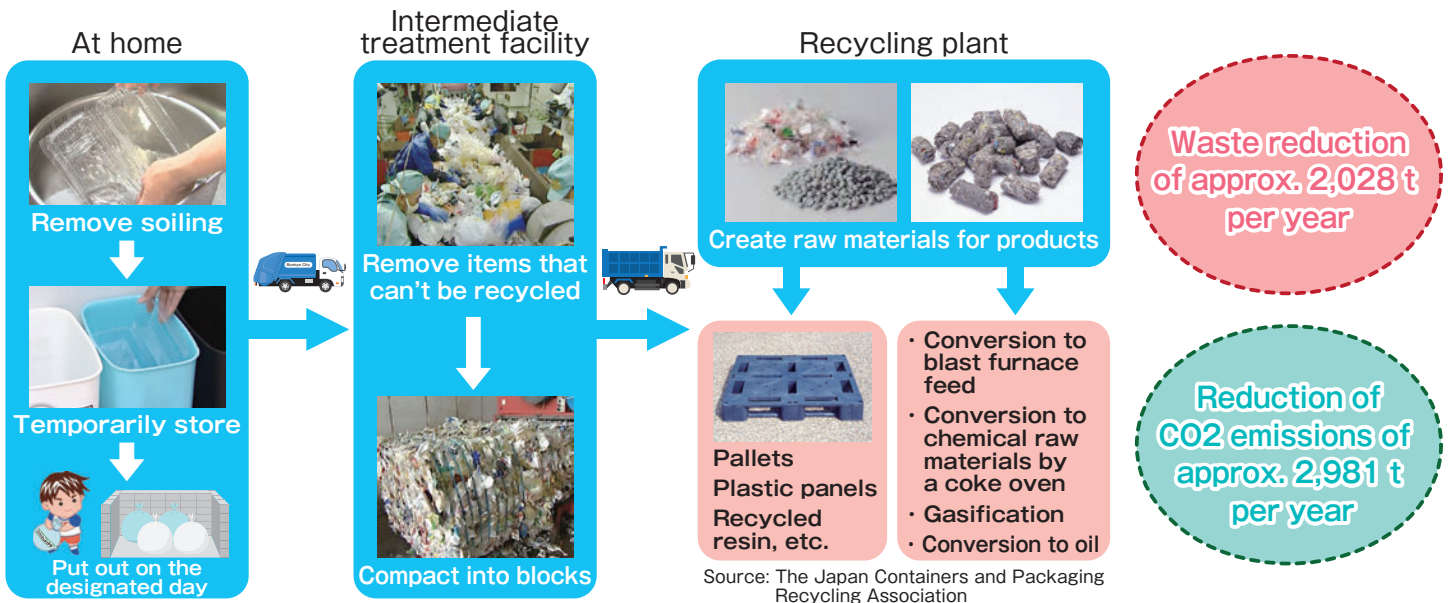
Where plastic goes

Currently



From April 2025

Combustible waste and CO2 can be reduced by shifting from incineration disposal to recycling.



Efforts like reduction of wastes and emissions of greenhouse gases will reduce impacts on the global environment, so we ask for your cooperation.

Please use the chatbot-based "Trash separation information service" !

What kind of trash is this? When is the collection day?

A "chatbot" is an "automatic conversation program" employing artificial intelligence (AI).

Access from the LINE app

Search with the search term "Recycling and Cleaning Division, Resource Environment Department, Bunkyo City" or become friends using the code at left.

Access from the city's website

Access the screen for the city's website using the code at left, and then click on "Risa-chan" at the bottom right of the screen.

Feel free to ask lots of questions about trash separation and collection!

Bunkyo City 3R promotion character Ikuru-chan

Bunkyo City 3R promotion character Risa-chan

English, Chinese, and Korean versions of this flyer are available. You can access them with this code. ▶

The flyer is distributed at the Recycling and Cleaning Division, the Bunkyo Sanitation Center, and Community Centers.

We hope you will use the following for reference!

Materials and a video on plastic separation, a Q&A from an explanatory event for city residents, and other information are available here.▶

A video on how to put out plastic is available here. The video will play at the video streaming site YouTube.▶

[Contacts for inquiries] General inquiries on operations ▶ Cleaning Business Section, Recycling and Cleaning Division, Resource Environment Department, Bunkyo City, Tel.: 03-5803-1184
 Regarding collection and transport ▶ Operations Section, Bunkyo Sanitation Center, Resource Environment Department, Bunkyo City, Tel.: 03-3813-6661